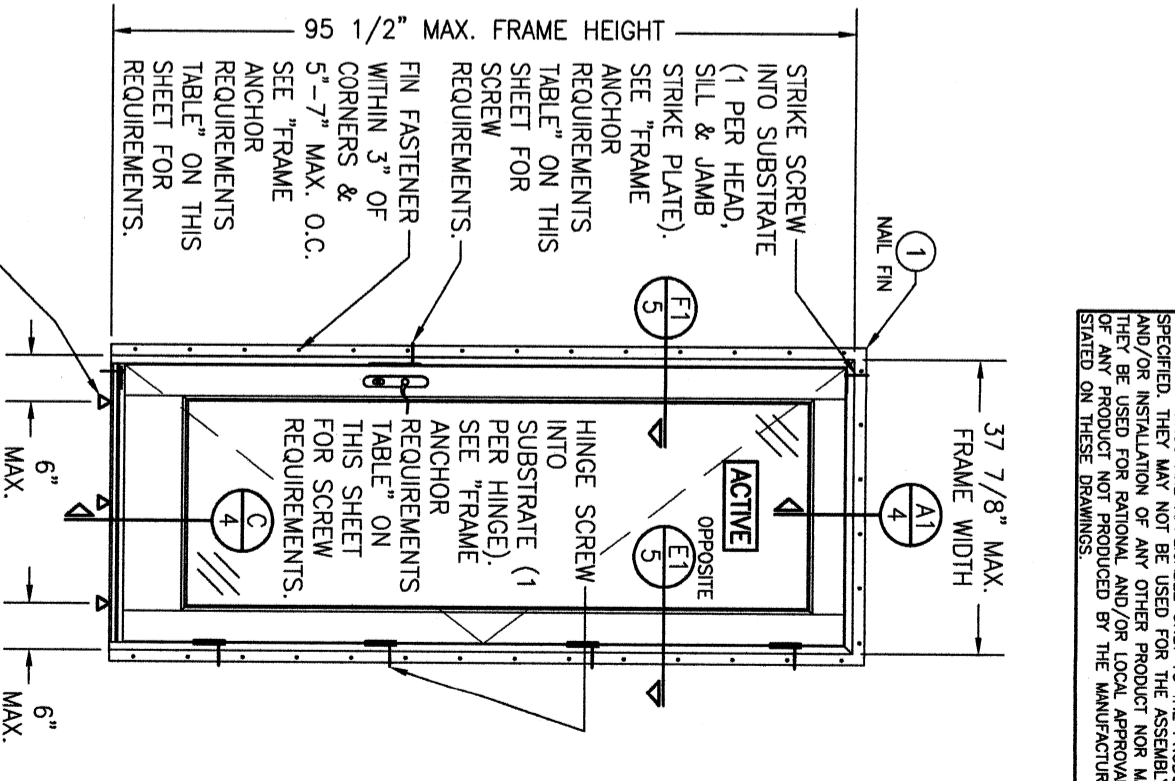
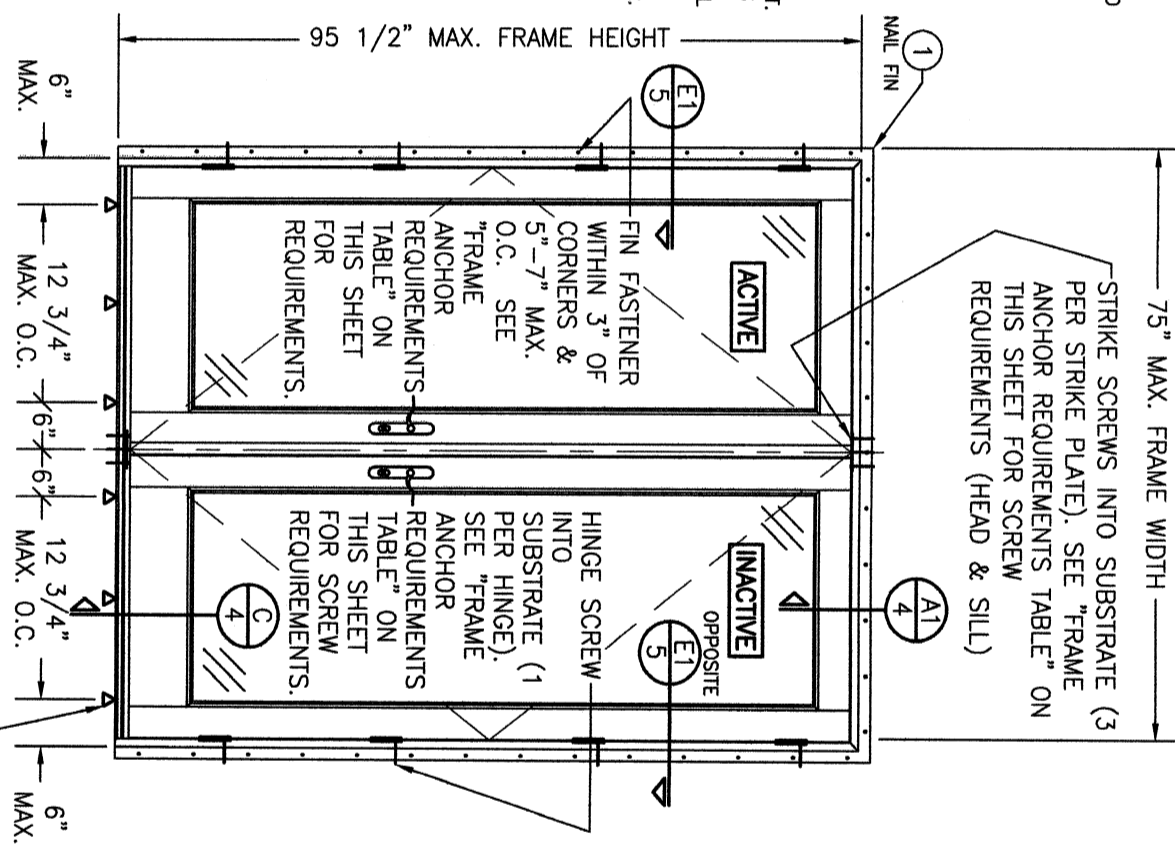


GENERAL NOTES:

1. ALL FASTENERS SHALL BE IN ACCORDANCE WITH THESE DRAWINGS. SPECIFIED ANCHOR EMBED TO BASE MATERIAL SHALL BE BEYOND WALL FINISH OR STUCCO.
 2. OPENINGS, BUCKING & BUCKING FASTENERS MUST BE PROPERLY DESIGNED & INSTALLED TO TRANSFER WIND LOADS TO THE STRUCTURE.
 3. THESE NON-IMPACT RATED PRODUCT INSTALLATIONS ARE IN ACCORDANCE WITH AND MEET THE REQUIREMENTS OF THE FLORIDA BUILDING CODE (FBC).
 4. ALL ANCHORS SECURING PRODUCT FRAMES TO PRESSURE TREATED BUCKS OR WOOD FRAMING SHALL BE CAPABLE OF RESISTING CORROSION CAUSED BY THE PRESSURE TREATING CHEMICALS IN THE WOOD.
 5. MATERIALS, INCLUDING BUT NOT LIMITED TO STEEL SCREWS, THAT COME INTO CONTACT WITH OTHER DISSIMILAR MATERIALS SHALL MEET THE REQUIREMENTS OF FLORIDA BUILDING CODE CHAPTER 20.
 6. TO THE BEST OF OUR KNOWLEDGE, THE PRODUCT SHOWN HEREIN IS CERTIFIED & QUALITY ASSURED BY A FLORIDA STATE APPROVED CERTIFICATION/QA ENTITY & SHALL BE LABELED IN ACCORDANCE WITH THE FBC AND THE FLORIDA DEPARTMENT OF BUSINESS & PROFESSIONAL REGULATION SPECIFICATIONS. PRODUCT ASSEMBLY IS NOT PART OF THIS DRAWING AND SHALL BE IN ACCORDANCE WITH THE MANUFACTURER'S QUALITY ASSURANCE SPECIFICATIONS & TESTING REPORTS.
 7. CERTIFICATION OF THESE PRODUCT INSTALLATIONS SHALL BE CONSIDERED VOID IF ANY OF THE FOLLOWING APPLY: 1) PRODUCT IS INSTALLED WITHOUT A BUILDING PERMIT FROM THE APPLICABLE LOCAL BUILDING DEPARTMENT. 2) PRODUCT IS INSTALLED BY ANYONE OTHER THAN A LICENSED CONTRACTOR EXPERIENCED WITH INSTALLATIONS OF THIS TYPE OF PRODUCT. 3) IF CHANGES HAVE OCCURRED TO THE PRODUCT'S CERTIFICATION ENTITY'S CERTIFICATE THAT CAUSE THESE INSTALLATIONS TO BE INCORRECT OR INCONSISTENT WITH WHAT HAS BEEN TESTED.
 8. THE LEAST DESIGN PRESSURE SPECIFIED EITHER IN THIS DRAWING OR IN THE PRODUCTS CERTIFICATION SHALL CONTROL FOR THE INSTALLED PRODUCT.
 9. THESE DRAWINGS CERTIFY THE PRODUCT INSTALLATION ONLY. WATER PROOFING OF THE INSTALLED PRODUCT IS NOT PART OF THIS INSTALLATION CERTIFICATION. THAT RESPONSIBILITY SHALL BE THAT OF THE MANUFACTURER &/OR INSTALLER.
- INSTALLATION EVALUATION IS BASED ON APPLICABLE ANCHOR STANDARDS AND/OR INFORMATION & RESULTS FROM APPLICABLE TEST REPORTS. THE FLORIDA BUILDING CODE VERSION CONSIDERED WITH THE EVALUATION WAS THAT IN FORCE AT THE TIME OF THE EVALUATION. IN THE EVENT OF CODE VERSION CHANGES/UPDATES OR IN THE EVENT THAT NEW OR ADDITIONAL TESTING IS COMPLETED ON THE REFERENCED PRODUCT, PRIOR TO STATING CODE COMPLIANCE WITH THE STATE, THE MANUFACTURER SHALL CONFIRM WITH THE INSTALLATION EVALUATION ENGINEER OF RECORD THAT THE INSTALLATIONS SPECIFIED HERE-IN ARE CURRENT WITH THE THEN CURRENT TESTING, CODE AND APPLICABLE STANDARDS.

FRAME ANCHOR REQUIREMENTS TABLE

OPENING TYPE (SUBSTRATE)	FRAME/CUP/NAIL FIN/HINGE/STRIKE TO OPENING FASTENER TYPE	MINIMUM EMBED	MINIMUM EDGE DIST.
(4) MIN. 2X6 WOOD FRAME OR BUCK (MIN. GR. 3 & G=0.55)	NO. 10 SMS OR WOOD SCREW	1 1/4"	3/4"
	MIN. 18 GA. 33 KSI METAL STUD	NO. 10 GR. 5 SELF TAP/DRILL SCREW	FULL
	MIN. 1/8" THK A36 STEEL	NO. 10 GR. 5 SELF TAP/DRILL SCREW	FULL
	MIN. 1/8" THK 6063-T5 ALUM.	NO. 10 GR. 5 SELF TAP/DRILL SCREW	FULL
C-90 CMU/2500 PSI CONCRETE	(1) 1/4" CONCRETE SCREW	1 1/4"	2"
	(2) INSTALLATION CLIP SCREWS (BENT & 3-PIECE CLIPS)		
	(4) MIN. 2X6 WOOD FRAME OR BUCK (MIN. GR. 3 & G=0.55)	NO. 8 X 1 1/2" SMS	1 3/8"
	MIN. 1/8" THK A36 STEEL	NO. 8 GR. 5 SELF TAP/DRILL SCREW	FULL
INSTALLATION CLIP SCREWS (STRAIGHT CLIPS)	MIN. 1/8" THK 6063-T5 ALUM.	NO. 8 GR. 5 SELF TAP/DRILL SCREW	FULL
	MIN. 2X6 WOOD FRAME OR BUCK (MIN. GR. 3 & G=0.55)	NO. 8 X 1 1/2" SMS	1 3/8"
	MIN. 18 GA. 33 KSI METAL STUD	NO. 8 GR. 5 SELF TAP/DRILL SCREW	FULL
	MIN. 1/8" THK A36 STEEL	NO. 8 GR. 5 SELF TAP/DRILL SCREW	FULL
(3) NAILING FIN FASTENERS	MIN. 1/8" THK 6063-T5 ALUM.	NO. 8 GR. 5 SELF TAP/DRILL SCREW	FULL
	(4) MIN. 2X6 WOOD FRAME OR BUCK (MIN. GR. 3 & G=0.55)	NO. 8 SMS SCREW	1 3/8"
	MIN. 2X6 WOOD FRAME OR BUCK (MIN. GR. 3 & G=0.55)	1 1 GA. ROOFING NAIL	1 3/8"
	MIN. 1/8" THK A36 STEEL	NO. 8 GR. 5 SELF TAP/DRILL SCREW	FULL
HINGE & STRIKE SCREWS	MIN. 1/8" THK 6063-T5 ALUM.	NO. 8 GR. 5 SELF TAP/DRILL SCREW	FULL
	(4) MIN. 2X6 WOOD FRAME OR BUCK (MIN. GR. 3 & G=0.55)	NO. 8 SMS OR WOOD SCREW	1 1/4"
	MIN. 18 GA. 33 KSI METAL STUD	NO. 8 GR. 5 SELF TAP/DRILL SCREW	FULL
	MIN. 1/8" THK A36 STEEL	NO. 8 GR. 5 SELF TAP/DRILL SCREW	FULL
C-90 CMU/2500 PSI CONCRETE	(1) 3/16" CONCRETE SCREW	1 1/4"	2"
	(1) CONCRETE SCREWS SHALL BE ELCO ULTRACONS (C.S.), ELCO CRETE-FLEX (S.S.), ITW RAMSET/RED HEAD TAPCONS (C.S. OR S.S.) OR HILLTI KWIK-CON II (C.S. OR S.S.).		
	(2) STANDARD BENT CLIP INSTALLATION SCREWS SHALL BE POSITIONED WITHIN 1/4" OF THE BUCK/SUBSTRATE EDGE AND, IF INTO WOOD, ANGLED 20 TO 30 DEGREES INTO THE BUCK.		
	(3) WHEN SCREWS ARE USED WITH THE NAIL FIN, THEY MUST BE A WAFFLE HEAD SCREW OR HAVE A FLAT WASHER AT THE SCREW HEAD.		
(4) 2X6 BUCKS MAY BE RIPPED DOWN TO MIN 4 3/4" DEPTH EXCEPT WHEN THE STRAIGHT CLIP INSTALLATION CONDITION APPLIES.			



EDGE DISTANCE MAY BE DECREASED TO 1/2" IF SCREWS ARE ANGLED 15 TO 20 DEGREES AWAY FROM THE EDGE.

ANCHOR/SUBSTRATE EVALUATION NOTE:
ALL ANCHORS IN THEIR SPECIFIED SUBSTRATES HAVE BEEN ANALYZED IN ACCORDANCE WITH THEIR APPLICABLE STANDARD(S) AND ARE FOUND TO BE CAPABLE OF SUPPORTING ALL LOADS IMPOSED ON THEM UNDER THE GUIDELINES OF THIS DOCUMENT. ANY SUBSTRATES OR CONDITIONS OUTSIDE OF WHAT IS SHOWN HERE-IN SHALL BE SUBJECT TO JOB SPECIFIC ENGINEER'S REVIEW & CERTIFICATION.

HINGE REQUIREMENTS

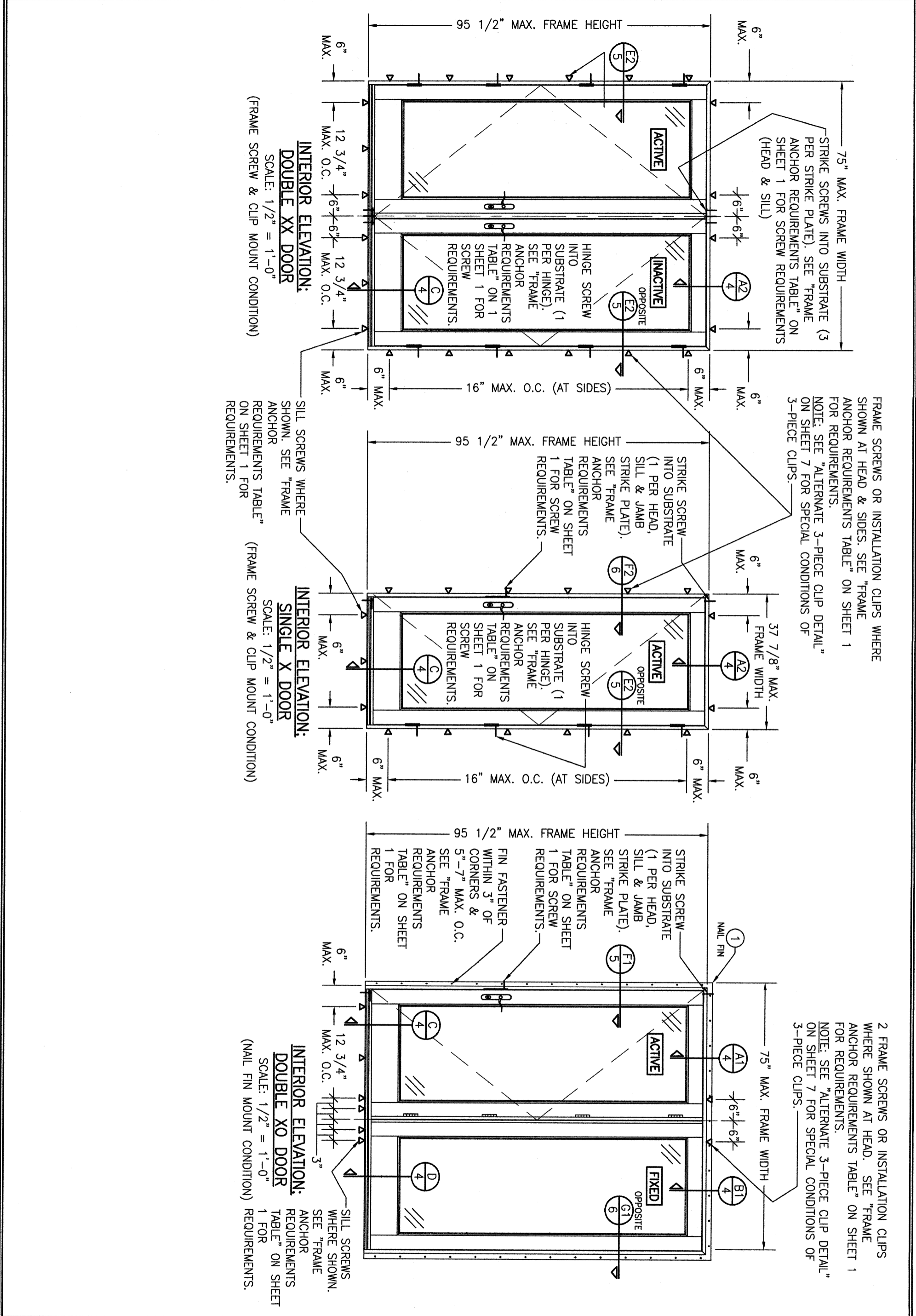
FRAME HEIGHT	QUANTITY PER PANEL
OVER 83 1/2"	4
83 1/2" AND LESS	3

ALLOWABLE DESIGN PRESSURE
+/-50 PSF

THESE DRAWINGS ARE APPLICABLE ONLY TO THE PRODUCT SPECIFIED. THEY MAY NOT BE USED FOR THE ASSEMBLY AND/OR INSTALLATION OF ANY OTHER PRODUCT NOR MAY THEY BE USED FOR RATIONAL AND/OR LOCAL APPROVAL OF ANY PRODUCT NOT PRODUCED BY THE MANUFACTURER STATED ON THESE DRAWINGS.


DRAWING NO. 1239 SHEET NO. 1 OF 8	CERTIFICATION WARREN W. SCHAEFER, P.E. P.E. NO. 44135	DRAWING TITLE LIFESTYLE SERIES NON-IMPACT CLAD IN-SWING DOOR	MANUFACTURER PELLA CORPORATION 102 MAIN STREET PELLA, IA 50219 641-621-1000
		CONSULTANTS W. W. SCHAEFER ENGINEERING & CONSULTING, P.A. 25601 AYSEN DRIVE PUNTA GORDA, FL 33983 PHONE: 561-744-3424	CHECKED BY: W.W.S. DATE: 09/18/08

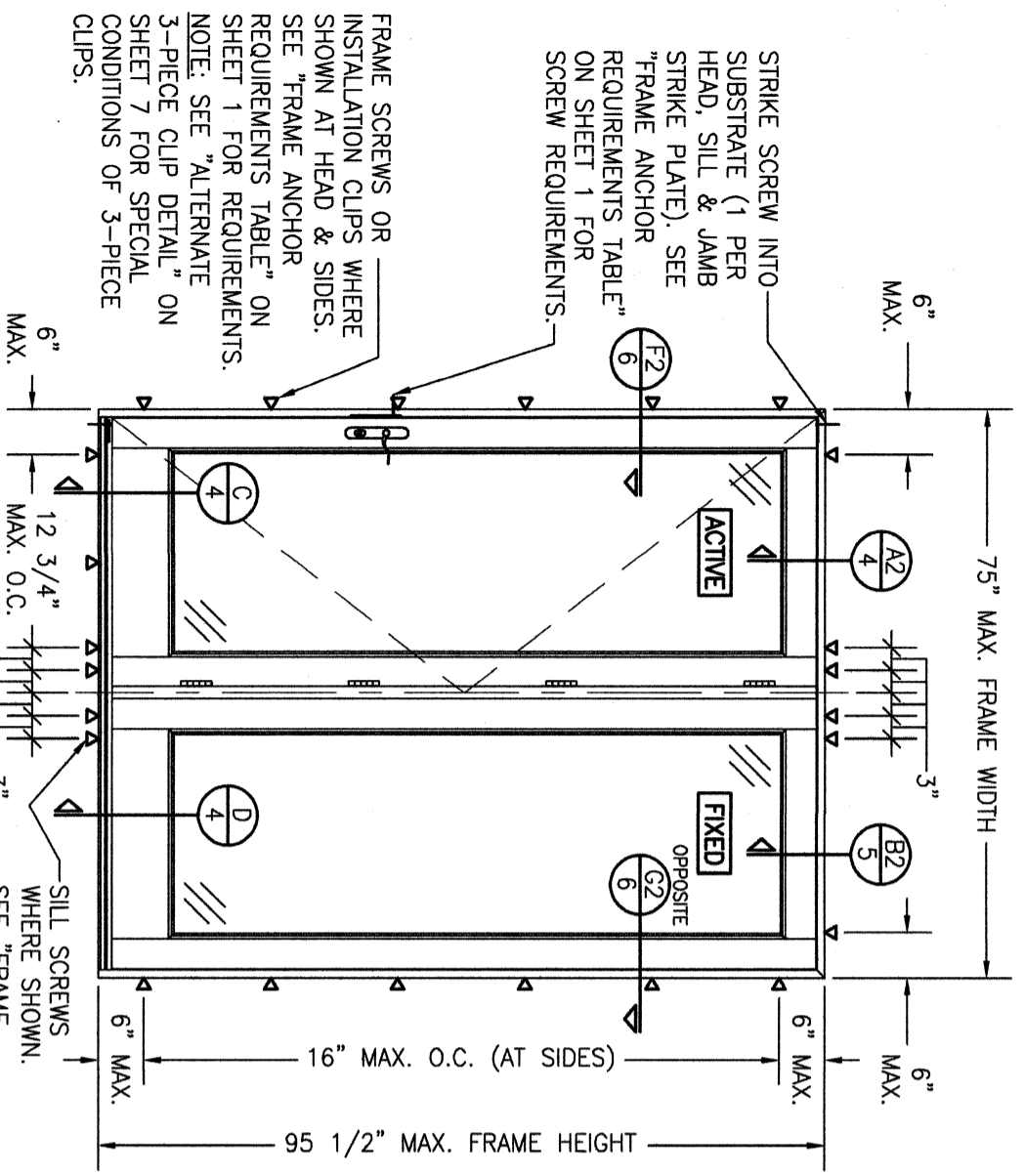
NO.	REVISION DESCRIPTION	BY	DATE
A1	UPDATE PER NEW TESTING	W.R.M.	04/28/11
B1	UPDATE TO CURRENT STANDARDS	W.W.S.	08/24/11
C1	UPDATE TO CURRENT STANDARDS	W.W.S.	10/08/14
D1	EDIT PROFILES & INSTALL PER	W.W.S.	03/12/15
	UPDATED TESTING		
E1	ADDED NEW CLIP INSTALL OPTION	W.W.S.	06/19/24



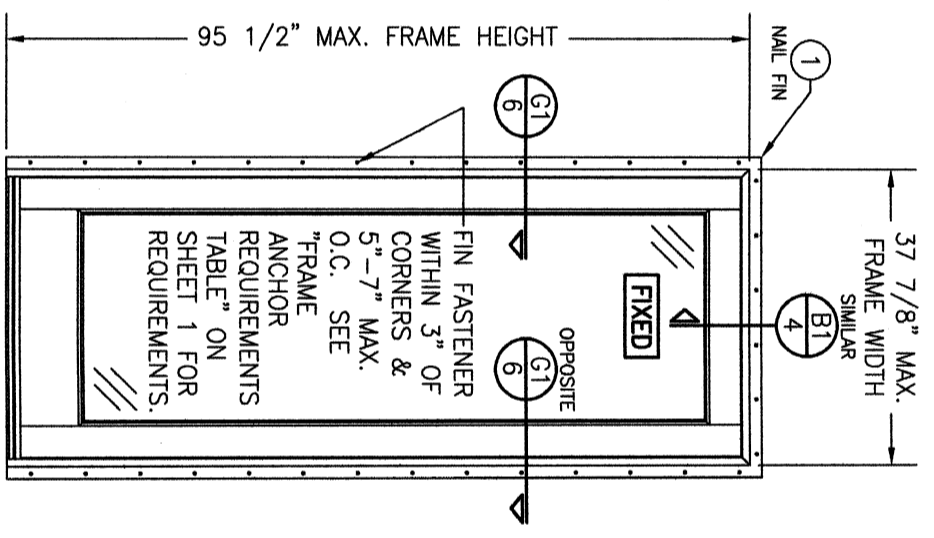
FRAME SCREWS OR INSTALLATION CLIPS WHERE SHOWN AT HEAD & SIDES. SEE "FRAME ANCHOR REQUIREMENTS TABLE" ON SHEET 1 FOR REQUIREMENTS.
 NOTE: SEE "ALTERNATE 3-PIECE CLIP DETAIL" ON SHEET 7 FOR SPECIAL CONDITIONS OF 3-PIECE CLIPS.

2 FRAME SCREWS OR INSTALLATION CLIPS WHERE SHOWN AT HEAD. SEE "FRAME ANCHOR REQUIREMENTS TABLE" ON SHEET 1 FOR REQUIREMENTS.
 NOTE: SEE "ALTERNATE 3-PIECE CLIP DETAIL" ON SHEET 7 FOR SPECIAL CONDITIONS OF 3-PIECE CLIPS.

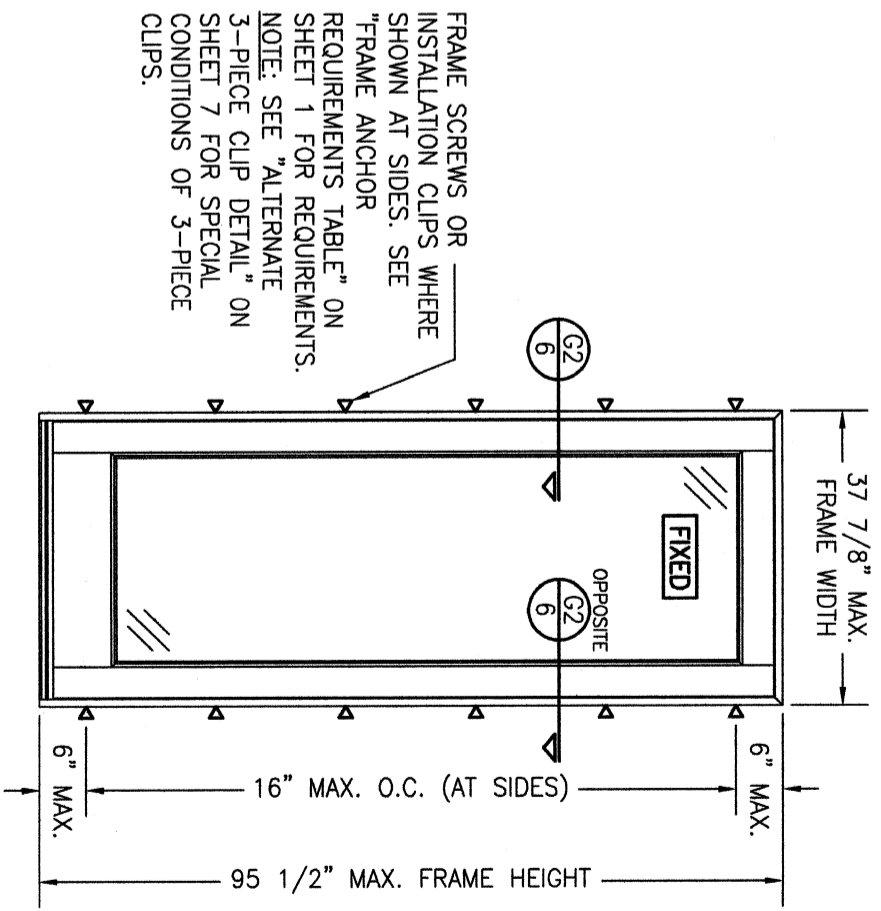
DRAWN BY: W.R.M.	CHECKED BY: W.M.S.	PLT:	1-24	DATE:	09/18/08
		NO.	REVISION	DESCRIPTION	BY
DRAWING TITLE		LIFESTYLE SERIES NON-IMPACT CLAD IN-SWING DOOR			
CONSULTANTS		W. W. SCHAEFER ENGINEERING & CONSULTING, P.A.			
MANUFACTURER		 PELLA CORPORATION 102 MAIN STREET PELLA, IA 50219 641-621-1000			
CERTIFICATION		WARREN W. SCHAEFER, P.E. P.E. NO. 44135			
DRAWING NO. REV.		1239 E			
SHEET NO.		2 OF 8			



**INTERIOR ELEVATION:
DOUBLE XO DOOR**
SCALE: 1/2" = 1'-0"
(FRAME SCREW & CLIP
MOUNT CONDITION)



**INTERIOR ELEVATION:
SINGLE FIXED PANEL DOOR**
SCALE: 1/2" = 1'-0"
(NAIL FIN MOUNT CONDITION)




**INTERIOR ELEVATION:
SINGLE FIXED PANEL DOOR**
SCALE: 1/2" = 1'-0"
(FRAME SCREW & CLIP MOUNT CONDITION)

NO.	REVISION DESCRIPTION	BY	DATE

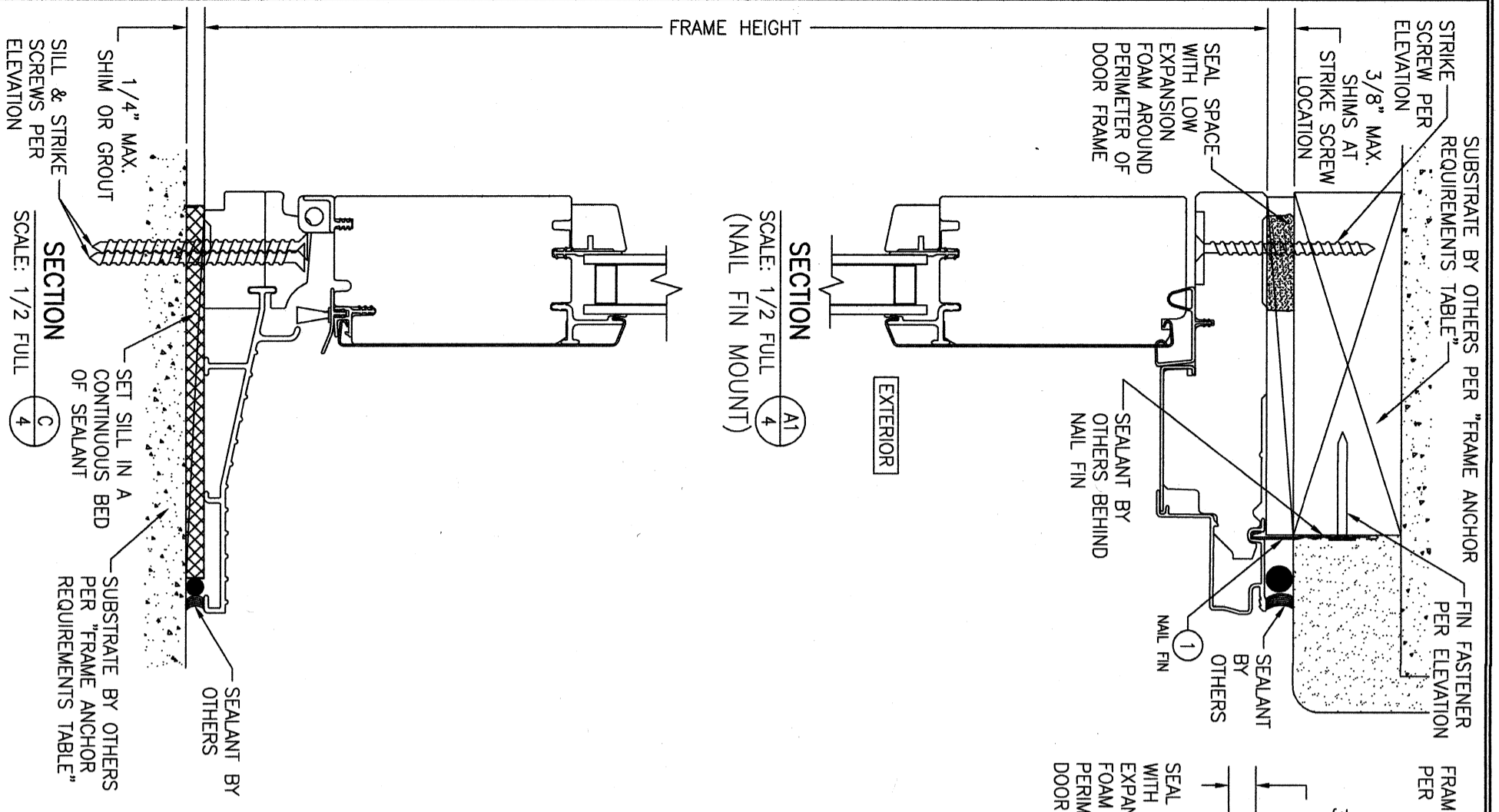
DRAWN BY: W.M.M.
CHECKED BY: W.M.S.
PLOT: 1-24
DATE: 09/18/08

DRAWING TITLE
LIFESTYLE SERIES NON-IMPACT CLAD IN-SWING DOOR

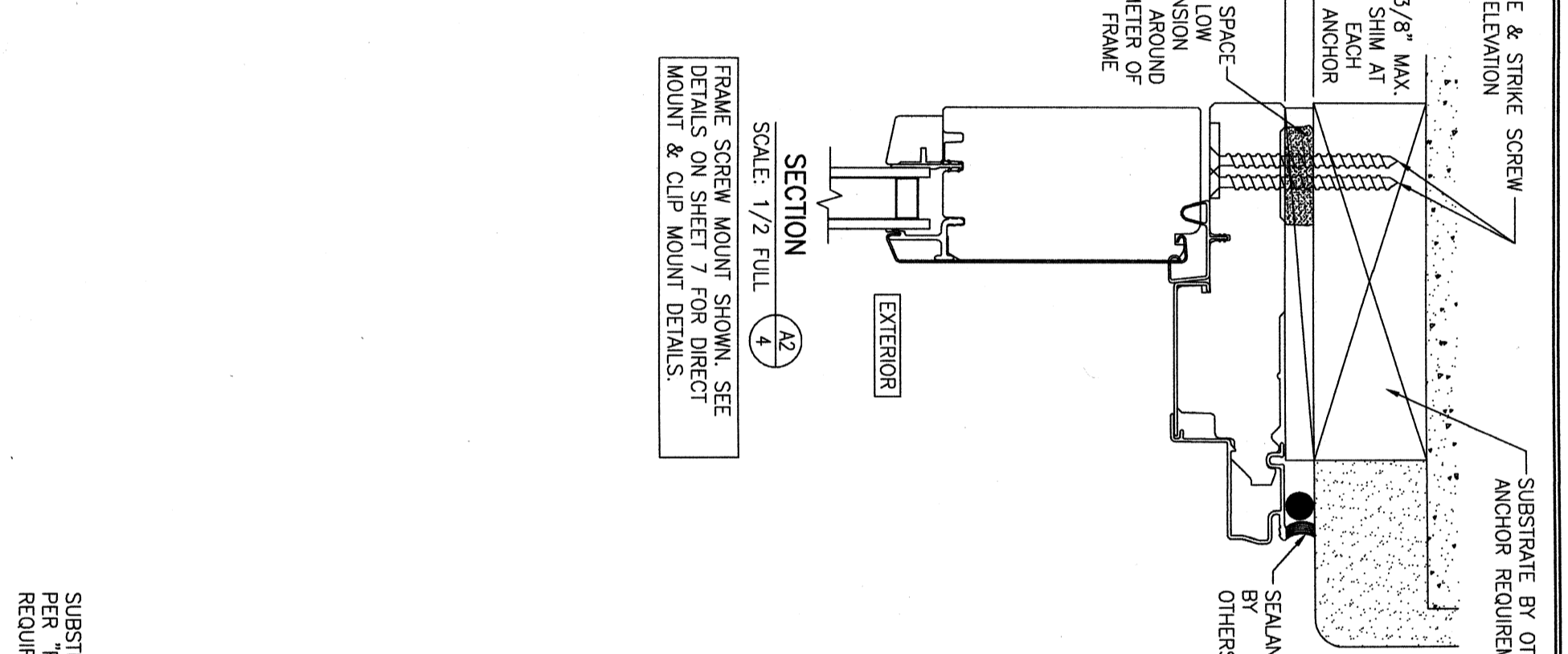
CONSULTANTS
W. W. SCHAEFER ENGINEERING & CONSULTING, P.A.
25601 AYSEN DRIVE
PUNTA GORDA, FL 33983
PHONE: 561-744-3424

MANUFACTURER

PELLA CORPORATION
 102 MAIN STREET
 PELLA, IA 50219
 641-621-1000

CERTIFICATION
WARREN W. SCHAEFER, P.E.
P.E. NO. 44135

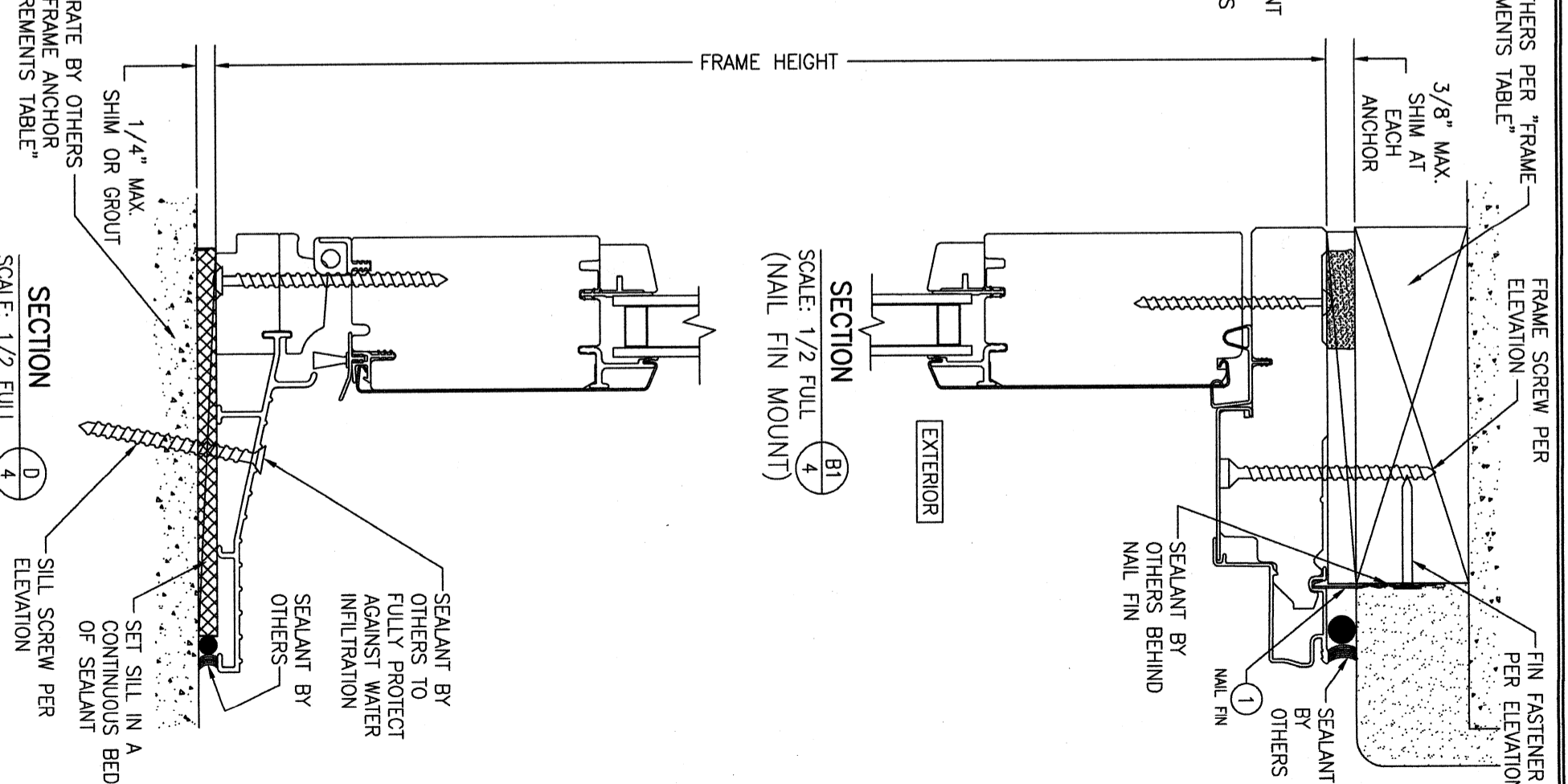


SECTION A1
SCALE: 1/2 FULL
(NAIL FIN MOUNT)




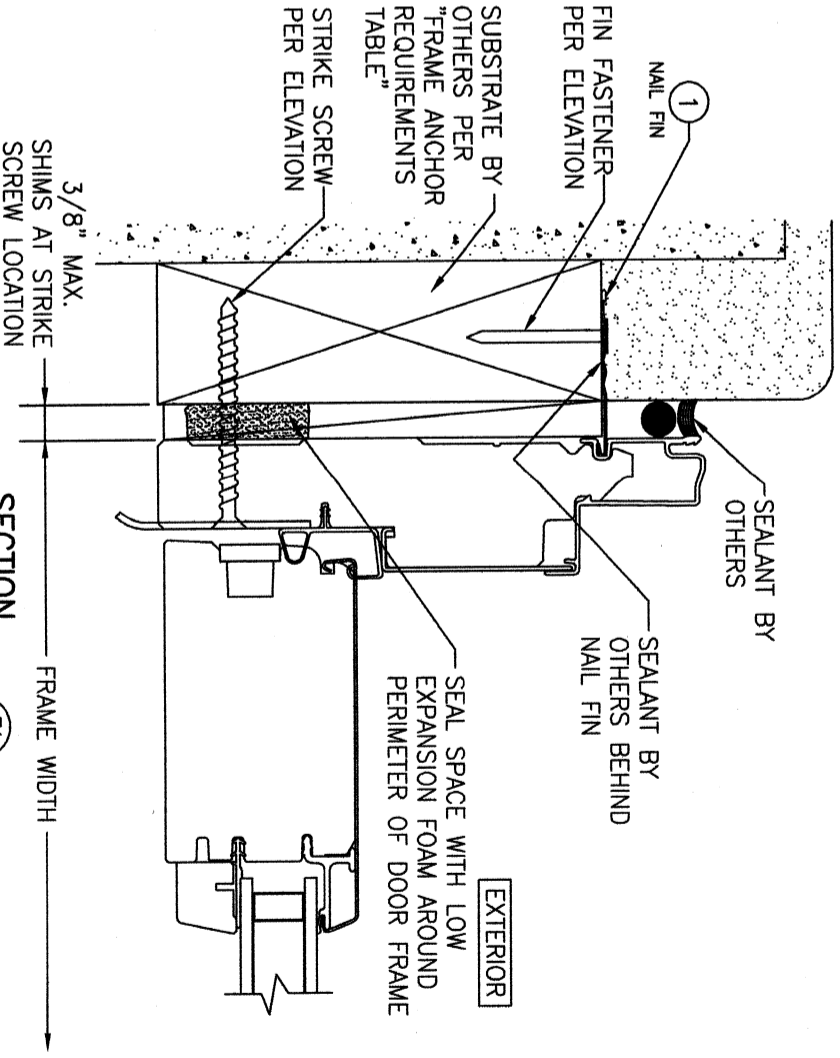
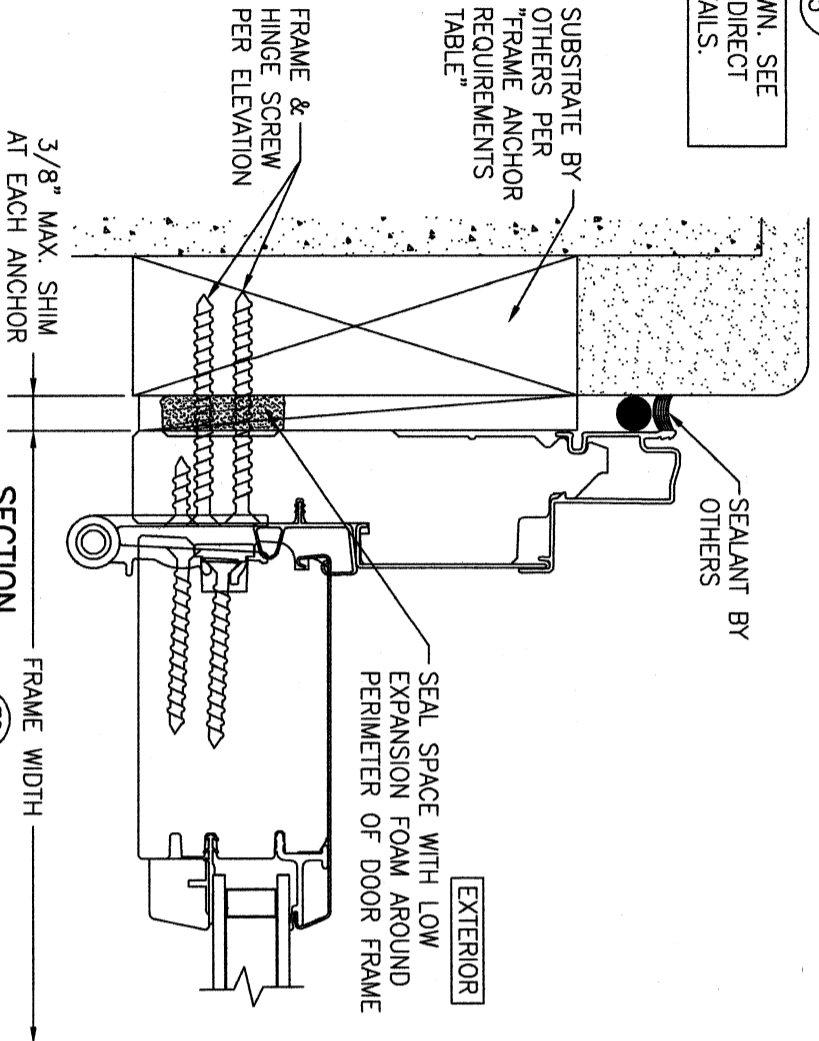
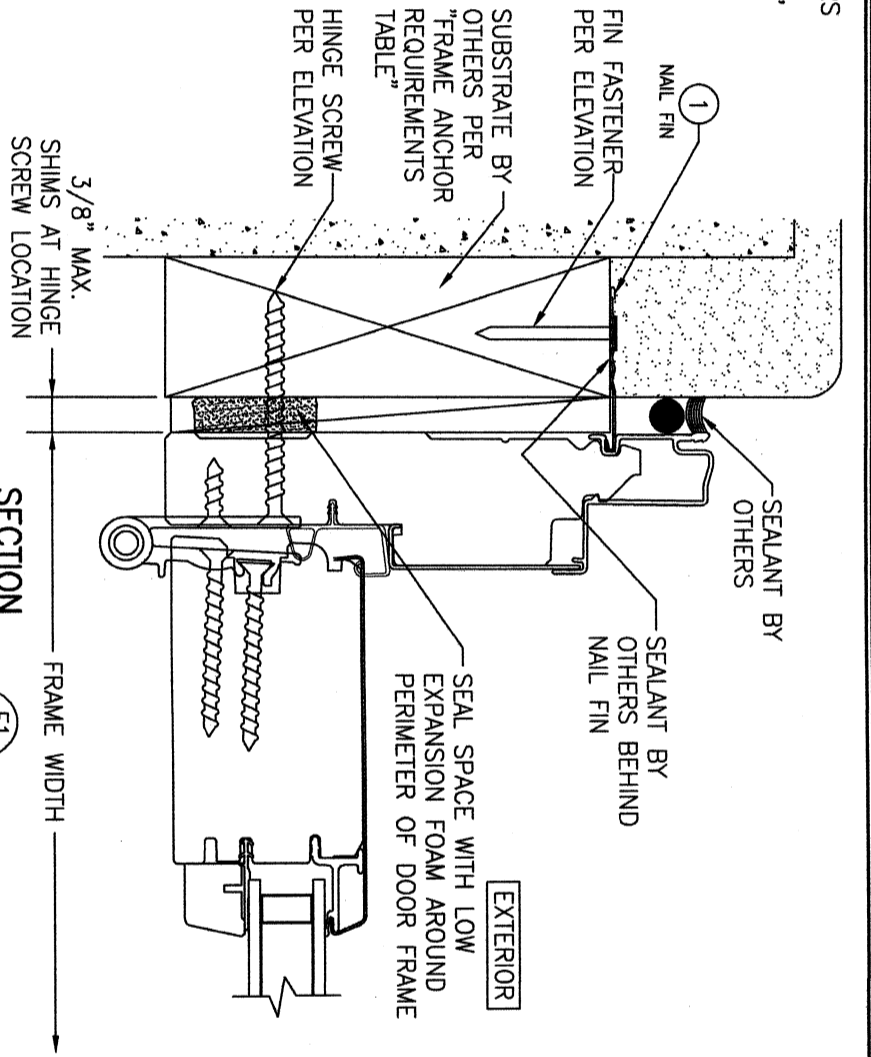
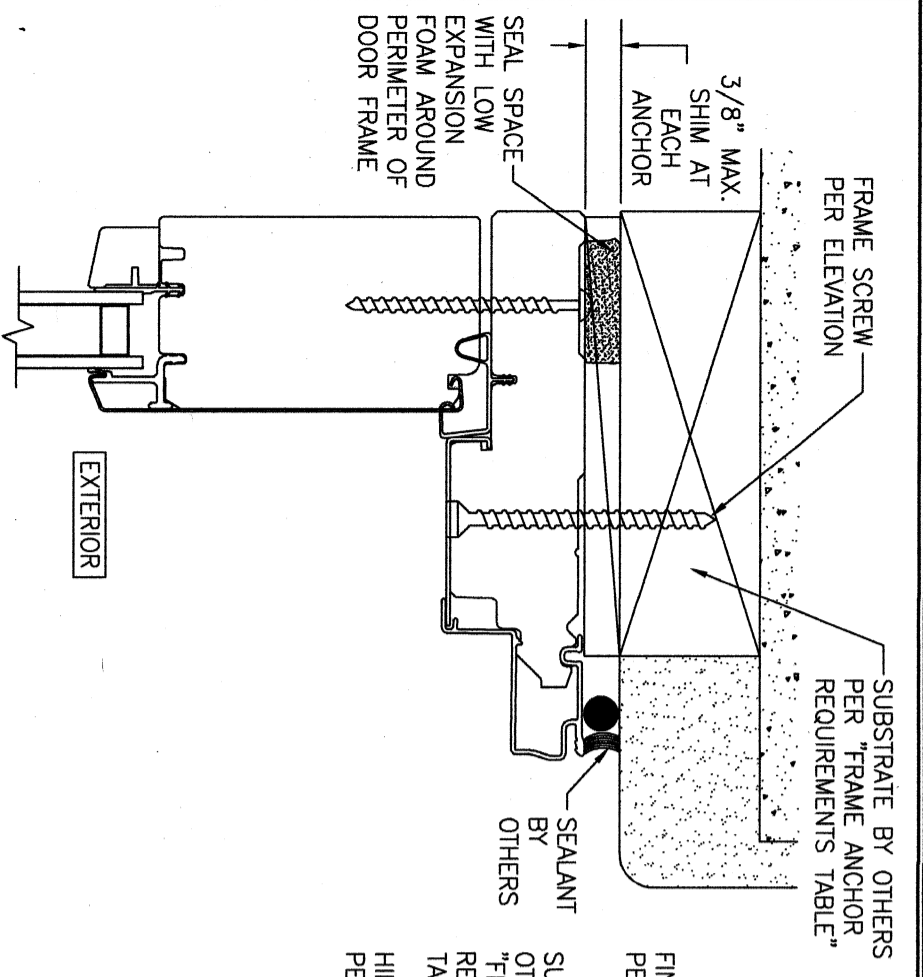
SECTION A2
SCALE: 1/2 FULL
(NAIL FIN MOUNT)

FRAME SCREW MOUNT SHOWN. SEE DETAILS ON SHEET 7 FOR DIRECT MOUNT & CLIP MOUNT DETAILS.



SECTION C
SCALE: 1/2 FULL

DRAWN BY: K.P.S.	CHECKED BY: W.M.S.	NO.	REVISION	DESCRIPTION	BY	DATE
		1-2				
DRAWING TITLE		LIFESTYLE SERIES NON-IMPACT CLAD IN-SWING DOOR				
CONSULTANTS		W. W. SCHAEFER ENGINEERING & CONSULTING, P.A. (CA 6809) 7480 150TH COURT NORTH PALM BEACH GARDENS, FL 33418 PHONE: 561-744-3424				
MANUFACTURER		 PELLA CORPORATION 102 MAIN STREET PELLA, IA 50219 641-621-1000				
CERTIFICATION	WARREN W. SCHAEFER, P.E. P.E. NO. 44135					
DRAWING NO. 1239	REV. E	SHEET NO. 4 OF 8				



FRAME SCREW MOUNT SHOWN. SEE DETAILS ON SHEET 7 FOR DIRECT MOUNT & CLIP MOUNT DETAILS.

FRAME SCREW MOUNT SHOWN. SEE DETAILS ON SHEET 7 FOR DIRECT MOUNT & CLIP MOUNT DETAILS.

NO.	REVISION DESCRIPTION	BY	DATE
1-2			07/01/03

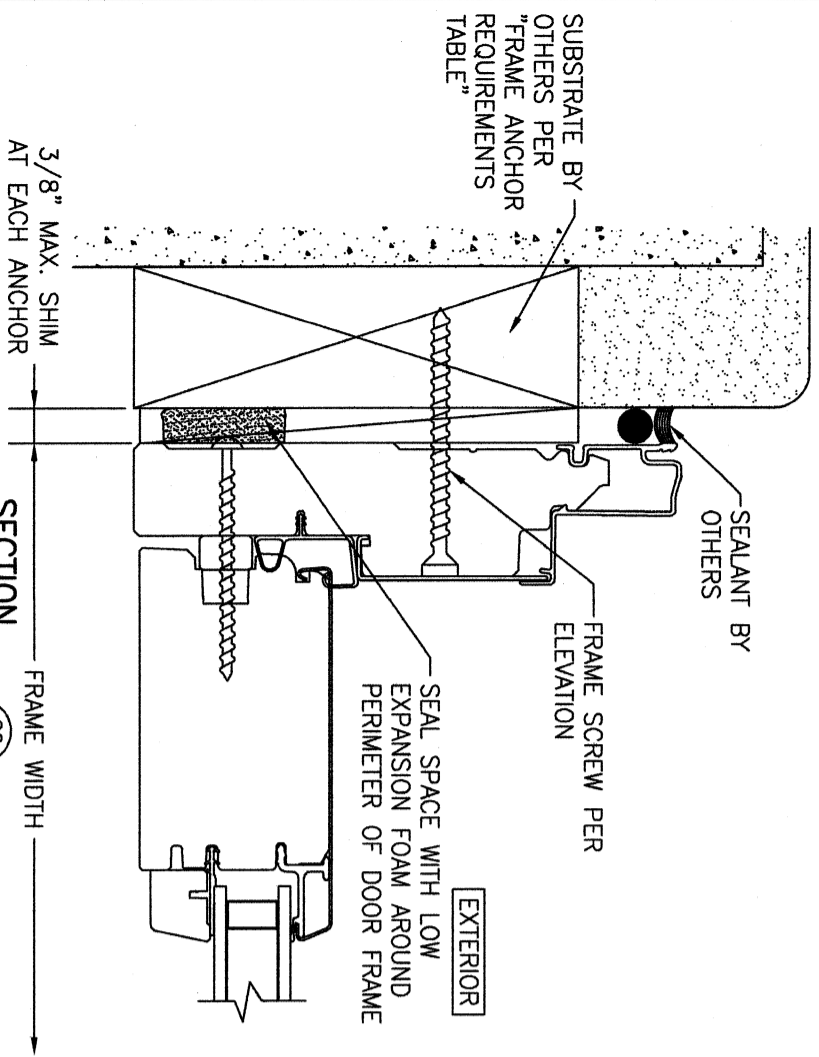
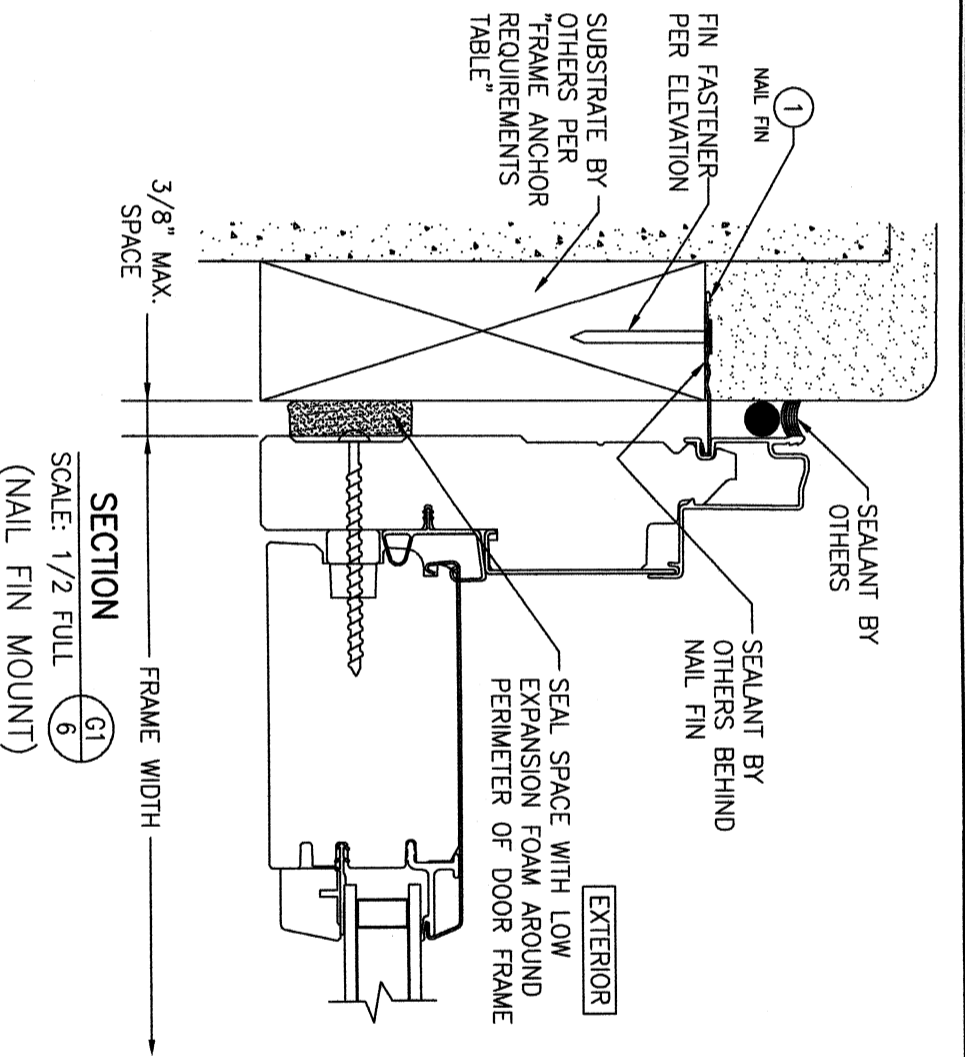
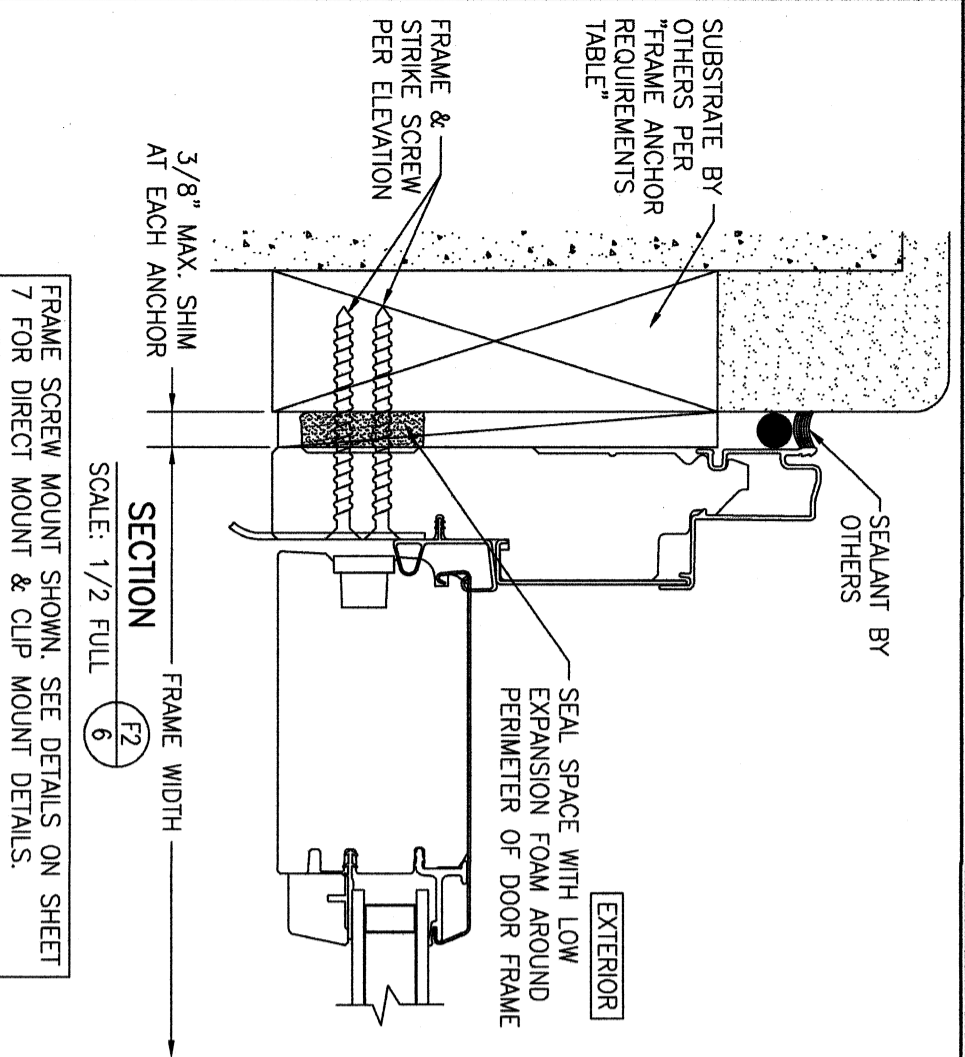
DRAWING TITLE
LIFESTYLE SERIES NON-IMPACT CLAD IN-SWING DOOR

CONSULTANTS
W. W. SCHAEFER ENGINEERING & CONSULTING, P.A. (CA 6809)
7480 150TH COURT NORTH
PALM BEACH GARDENS, FL 33418
PHONE: 561-744-3424

MANUFACTURER
Pella
PELLA CORPORATION
102 MAIN STREET
PELLA, IA 50219
641-621-1000

CERTIFICATION
WARREN W. SCHAEFER, P.E.
P.E. NO. 44135

DRAWING NO. 1239
SHEET NO. 5 OF 8




FRAME SCREW MOUNT SHOWN. SEE DETAILS ON SHEET 7 FOR DIRECT MOUNT & CLIP MOUNT DETAILS.

CERTIFICATION
 WARREN W. SCHAEFER, P.E.
 P.E. NO. 44135

DRAWING TITLE
LIFESTYLE SERIES NON-IMPACT CLAD IN-SWING DOOR

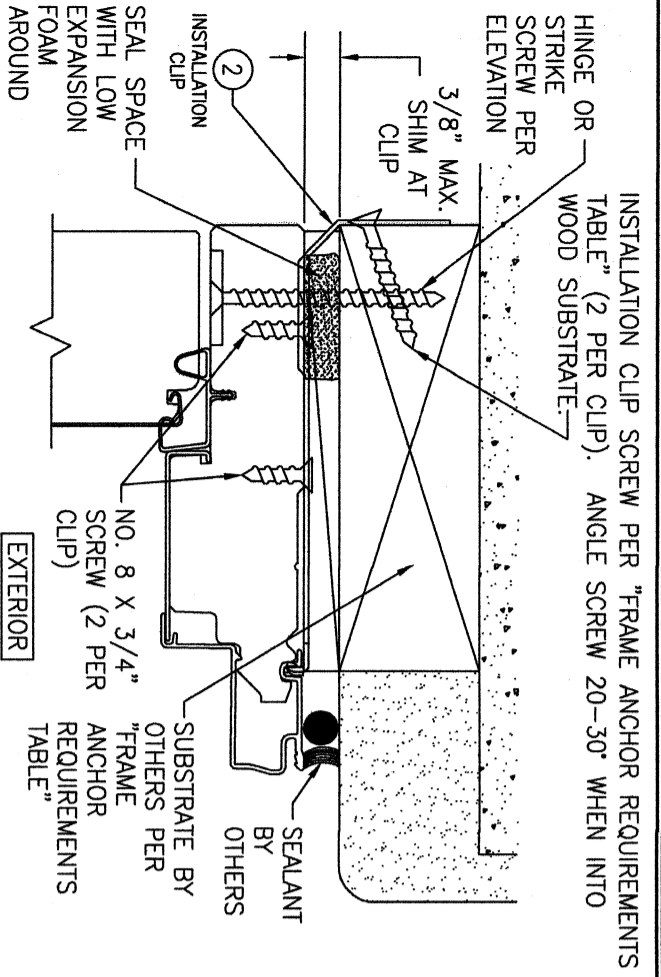
CONSULTANTS
W. W. SCHAEFER ENGINEERING & CONSULTING, P.A. (CA 6809)
 7480 150TH COURT NORTH
 PALM BEACH GARDENS, FL 33418
 PHONE: 561-744-3424

MANUFACTURER
 **PELLA CORPORATION**
 102 MAIN STREET
 PELLA, IA 50219
 641-621-1000

NO.	REVISION DESCRIPTION	BY	DATE
1-2			

DRAWN BY: K.P.S.
 CHECKED BY: W.M.S.
 DATE: 07/01/03

DRAWING NO. 1239
 SHEET NO. 6 OF 8



INSTALLATION CLIP SCREW PER "FRAME ANCHOR REQUIREMENTS TABLE" (2 PER CLIP). ANGLE SCREW 20-30° WHEN INTO WOOD SUBSTRATE.

HINGE OR STRIKE SCREW PER ELEVATION

3/8" MAX. SHIM AT CLIP

SEALANT BY OTHERS

SEAL SPACE WITH LOW EXPANSION FOAM AROUND PERIMETER OF DOOR FRAME

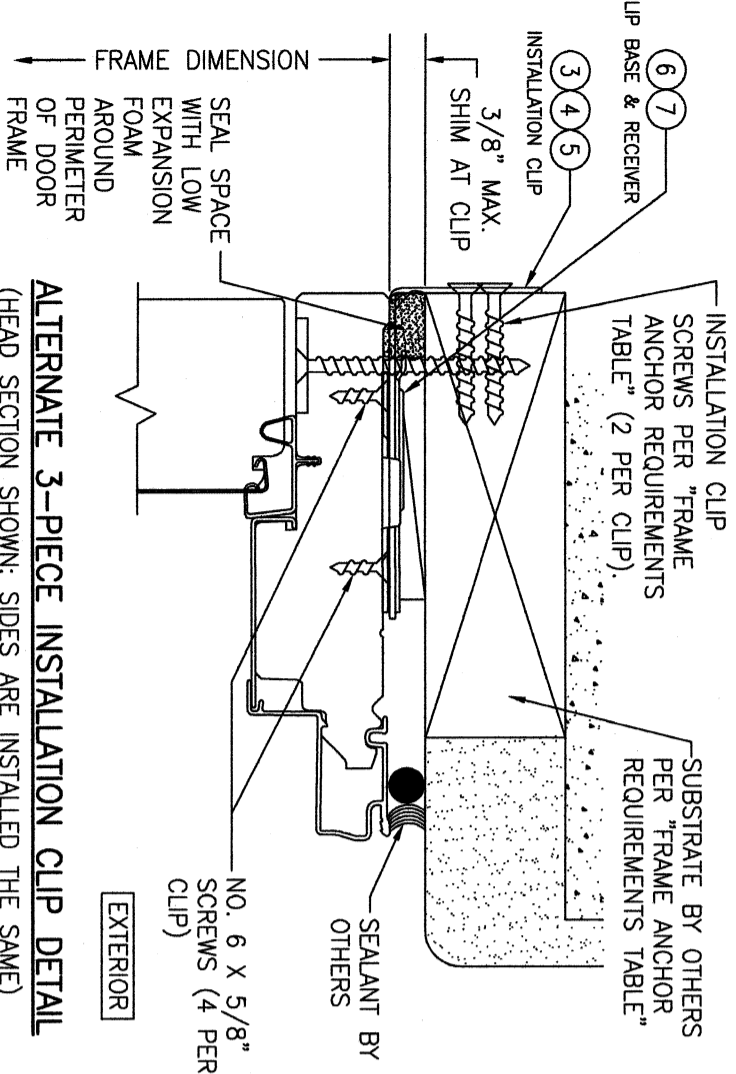
NO. 8 X 3/4" SCREW (2 PER "FRAME ANCHOR REQUIREMENTS TABLE")

SUBSTRATE BY OTHERS PER "FRAME ANCHOR REQUIREMENTS TABLE"

EXTERIOR

STANDARD INSTALLATION CLIP DETAIL
(BENT CLIP CONDITION)

(HEAD SECTION SHOWN; SIDES ARE INSTALLED THE SAME)
(FOR DETAIL NOT SHOWN, SEE OTHER SECTIONS)
(OPERABLE DOOR SHOWN, FIXED PANEL DOORS ALSO APPLY)
(INSTALLATION CLIPS ARE NOT APPLICABLE AT SILL)



INSTALLATION CLIP

CLIP BASE & RECEIVER

3/8" MAX. SHIM AT CLIP

SEAL SPACE WITH LOW EXPANSION FOAM AROUND PERIMETER OF DOOR FRAME

NO. 6 X 5/8" SCREWS (4 PER CLIP)

SEALANT BY OTHERS

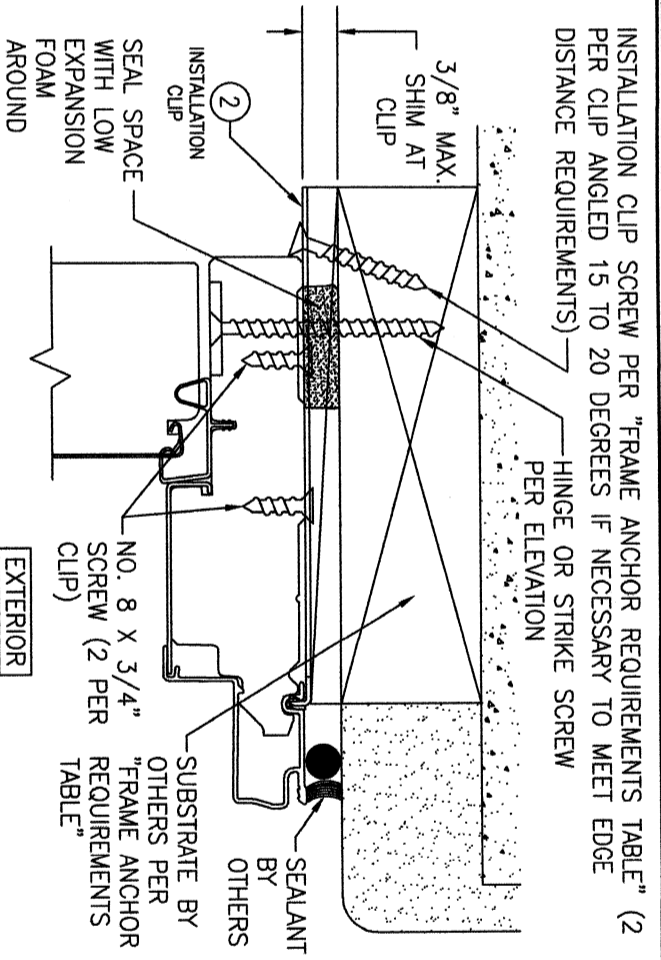
SUBSTRATE BY OTHERS PER "FRAME ANCHOR REQUIREMENTS TABLE"

EXTERIOR

ALTERNATE 3-PIECE INSTALLATION CLIP DETAIL

(HEAD SECTION SHOWN; SIDES ARE INSTALLED THE SAME)
(FOR DETAIL NOT SHOWN, SEE OTHER SECTIONS)
(OPERABLE DOOR SHOWN, FIXED PANEL DOORS ALSO APPLY)
(INSTALLATION CLIPS ARE NOT APPLICABLE AT SILL)

NOTE: 3-PIECE CLIPS MAY ACT AS SPOT OR FULL REPLACEMENTS OF EITHER THE FRAME SCREWS, STANDARD BENT CLIPS OR STRAIGHT CLIPS. THEREFORE, ANY ONE OR ALL OF THE FRAME SCREWS/CLIPS SPECIFIED IN THE ELEVATION(S) MAY BE REPLACED WITH 3-PIECE CLIPS.



INSTALLATION CLIP SCREW PER "FRAME ANCHOR REQUIREMENTS TABLE" (2 PER CLIP ANGLED 15 TO 20 DEGREES IF NECESSARY TO MEET EDGE DISTANCE REQUIREMENTS)

HINGE OR STRIKE SCREW PER ELEVATION

3/8" MAX. SHIM AT CLIP

SEALANT BY OTHERS

SEAL SPACE WITH LOW EXPANSION FOAM AROUND PERIMETER OF DOOR FRAME

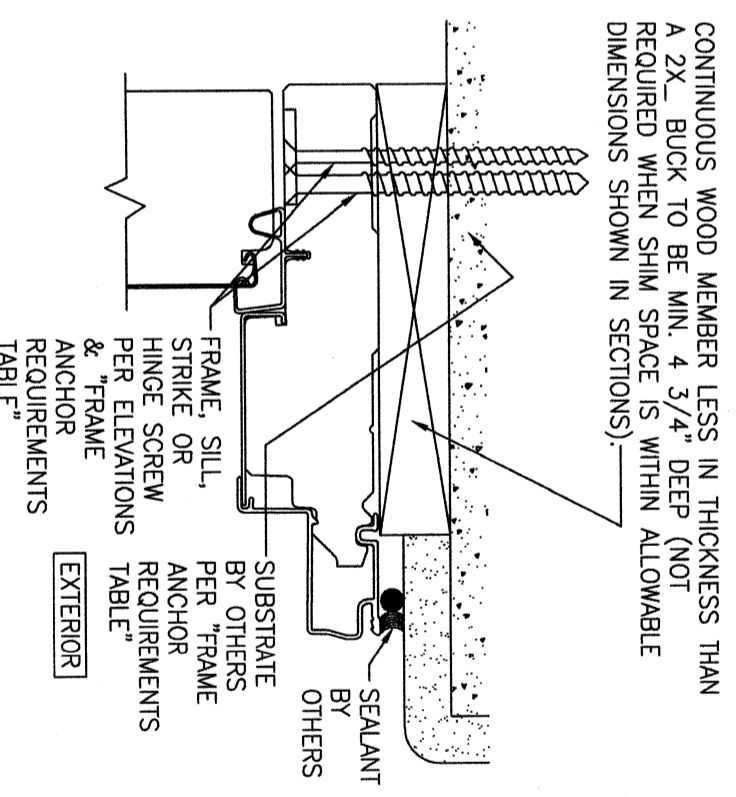
NO. 8 X 3/4" SCREW (2 PER "FRAME ANCHOR REQUIREMENTS TABLE")

SUBSTRATE BY OTHERS PER "FRAME ANCHOR REQUIREMENTS TABLE"

EXTERIOR

ALTERNATE INSTALLATION CLIP DETAIL
(STRAIGHT CLIP CONDITION)

(HEAD SECTION SHOWN; SIDES ARE INSTALLED THE SAME)
(FOR DETAIL NOT SHOWN, SEE OTHER SECTIONS)
(OPERABLE DOOR SHOWN, FIXED PANEL DOORS ALSO APPLY)
(INSTALLATION CLIPS ARE NOT APPLICABLE AT SILL)



CONTINUOUS WOOD MEMBER LESS IN THICKNESS THAN A 2X BUCK TO BE MIN. 4 3/4" DEEP (NOT REQUIRED WHEN SHIM SPACE IS WITHIN ALLOWABLE DIMENSIONS SHOWN IN SECTIONS).

SEALANT BY OTHERS

SUBSTRATE BY OTHERS PER "FRAME ANCHOR REQUIREMENTS TABLE"

FRAME, SILL, STRIKE OR HINGE SCREW PER ELEVATIONS & "FRAME ANCHOR REQUIREMENTS TABLE"

EXTERIOR

OPTIONAL DIRECT MOUNT DETAIL
TO SUBSTRATE WITH SPACER


(HEAD SECTION SHOWN; SILL & SIDES ARE INSTALLED THE SAME)
(FOR DETAIL NOT SHOWN, SEE OTHER SECTIONS)
(OPERABLE DOOR SHOWN, FIXED PANEL DOORS ALSO APPLY)

NO.	REVISION	DESCRIPTION	BY	DATE

DRAWN BY: K.P.S. CHECKED BY: W.M.S.
 PLOT: 1-2 DATE: 07/01/03

DRAWING TITLE
LIFESTYLE SERIES NON-IMPACT CLAD IN-SWING DOOR

CONSULTANTS
W. W. SCHAEFER ENGINEERING & CONSULTING, P.A. (CA 6809)
 7480 150TH COURT NORTH
 PALM BEACH GARDENS, FL 33418
 PHONE: 561-744-3424

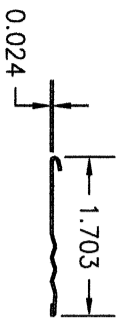
MANUFACTURER

PELLA CORPORATION
 102 MAIN STREET
 PELLA, IA 50219
 641-621-1000

CERTIFICATION

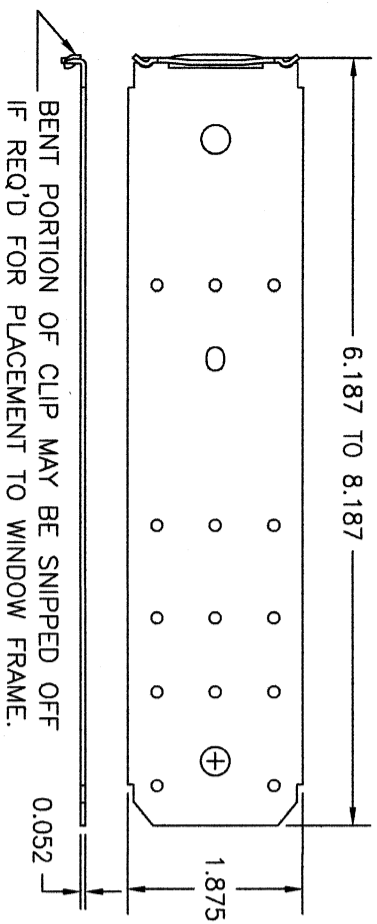
WARREN W. SCHAEFER, P.E.
 P.E. NO. 44135

DRAWING NO. 1239
 REV. E

SHEET NO. 7 OF 8

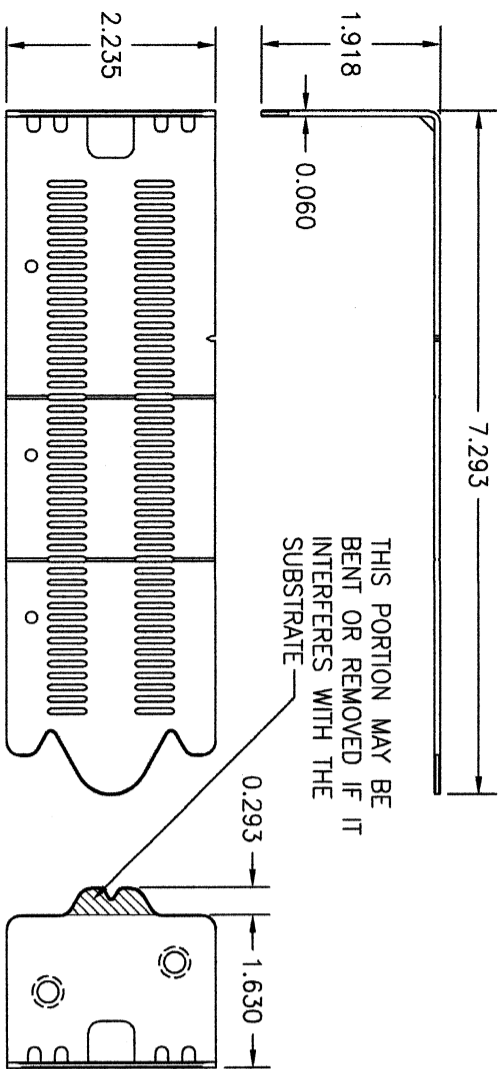


① **NAIL FIN**
(3003 H-14 ALUMINUM)



② **FRAME INSTALLATION CLIP**
(50 KSI STEEL)

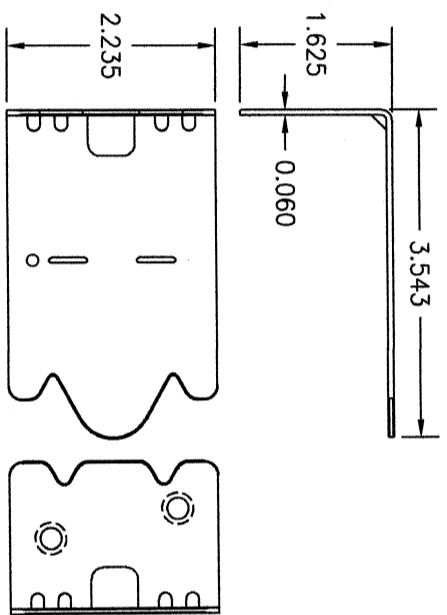
BENT PORTION OF CLIP MAY BE SNIPPED OFF IF REQ'D FOR PLACEMENT TO WINDOW FRAME.



⑤ **FRAME INSTALLATION CLIP**
(50 KSI STEEL)

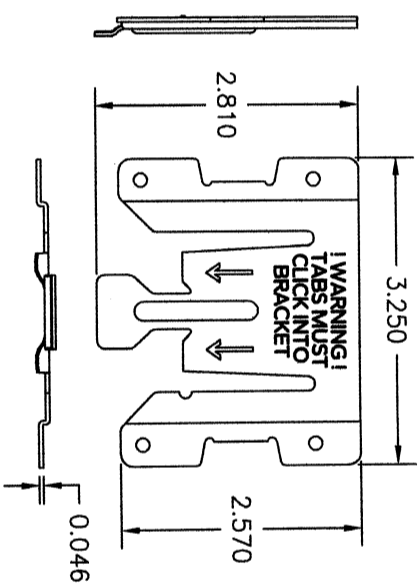
ADJUSTABLE CLIP USED WITH 3-PIECE CLIP SYSTEM

THIS PORTION MAY BE BENT OR REMOVED IF IT INTERFERES WITH THE SUBSTRATE

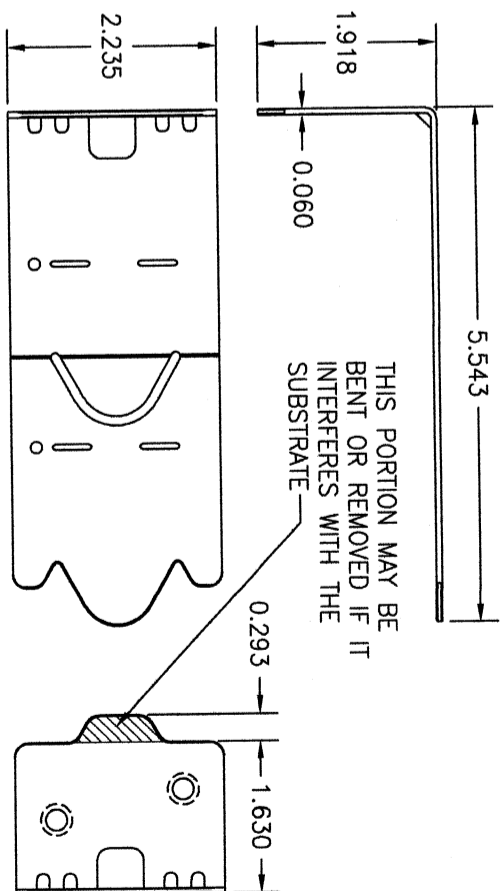


③ **FRAME INSTALLATION CLIP**
(50 KSI STEEL)

SHORT CLIP USED WITH 3-PIECE CLIP SYSTEM (TYPICALLY USED WITH 2X4 BUCK SUBSTRATE)



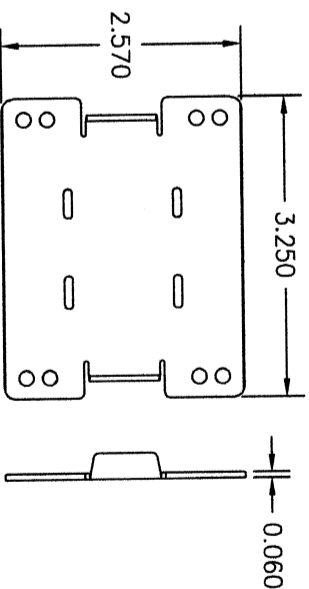
⑥ **3-PIECE CLIP RECEIVER**
(50 KSI STEEL)



④ **FRAME INSTALLATION CLIP**
(50 KSI STEEL)

LONG CLIP USED WITH 3-PIECE CLIP SYSTEM (TYPICALLY USED WITH 2X6 BUCK SUBSTRATE, BUT MAY ALSO BE USED WITH 2X4)

THIS PORTION MAY BE BENT OR REMOVED IF IT INTERFERES WITH THE SUBSTRATE



⑦ **3-PIECE CLIP BASE**
(33 KSI STEEL)

NO.	REVISION DESCRIPTION	BY	DATE
1-2			

DRAWN BY: K.P.S.
CHECKED BY: W.M.S.
DATE: 07/01/03

DRAWING TITLE
LIFESTYLE SERIES NON-IMPACT CLAD IN-SWING DOOR

CONSULTANTS
W. W. SCHAEFER ENGINEERING & CONSULTING, P.A. (CA 6809)
7480 150TH COURT NORTH
PALM BEACH GARDENS, FL 33418
PHONE: 561-744-3424

MANUFACTURER
Pella CORPORATION
102 MAIN STREET
PELLA, IA 50219
641-621-1000



CERTIFICATION

WARREN W. SCHAEFER, P.E.
P.E. NO. 44135

DRAWING NO. 1239
REV. E
SHEET NO. 8 OF 8